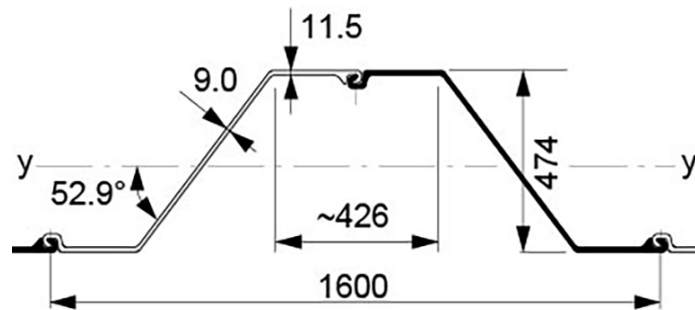




## AZ23-800 (Hot rolled sheet piles)



Section description	Product group	Shape	Section Modulus	Moment of Inertia	Width	Height	Thickness flange	Thickness web	Weight single	Weight	Coating 2 sides	Coating area
			in <sup>3</sup> /ft cm <sup>3</sup> /m	in <sup>4</sup> /ft cm <sup>4</sup> /m	inch mm	inch mm	inch mm	inch mm	lbs/ft kg/m	lbs/ft <sup>2</sup> kg/m <sup>2</sup>	ft <sup>2</sup> /ft m <sup>2</sup> /m	ft <sup>2</sup> /ft m <sup>2</sup> /m
AZ23-800	Hot rolled sheet piles	Z	43.3	404.6	31.50	18.66	0.453	0.354	63.6	24.21	6.94	1.32
			2,328	55,251	800	474	11.5	9.0	94.58	36.02	2.12	1.32

Production acc. EN10248 1&2 in varies steel grades  
 Origin: Luxembourg  
 Datasheet for estimation and comparison purposes