



MEEVER BRACING

systems & projects



MEEVER BRACING

we support you!

Meever Bracing Series is the first and only of its kind with removeable hydraulic rams. With our patented brace we are able to offer solutions for any excavation requirements.

Meever Bracing Series is manufactured in house so we are able to offer bespoke systems for excavation safety. We provide preliminary to full engineered designs for customer satisfaction.

In this brochure you can find basic information about our products and photographic documentation from our projects around the world.



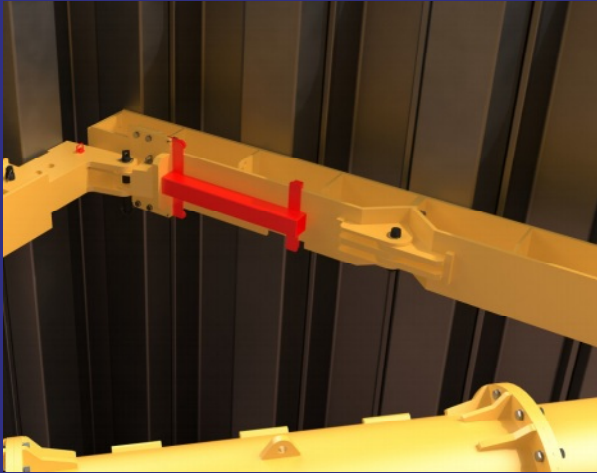
Your excavation

OUR SYSTEM

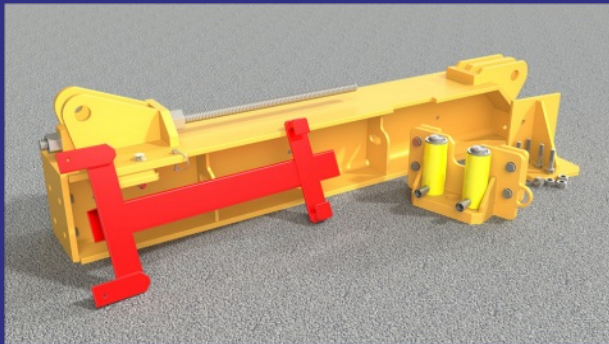
Meever Brace Series is a modular system designed and engineered to maintain excavation integrity, it allows flexibility on site and saves time and money. Most importantly it provides a safe working environment.



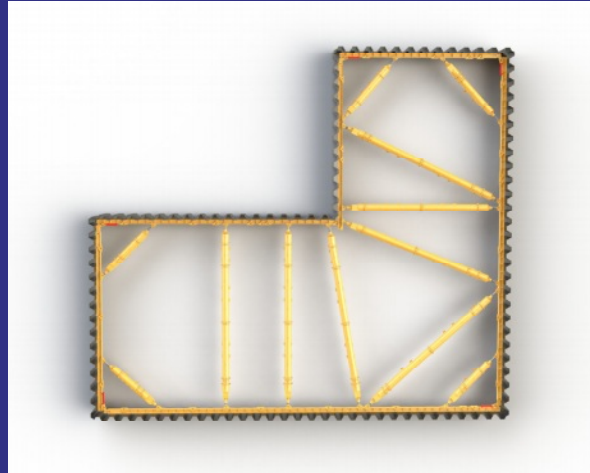
INNOVATIVE SOLUTIONS



Meever Barcing System has patented solutions used around the world. We optimize our systems every time we see the need after installation on the worksite. Our engineers are consistently working to design new innovative solutions. These solutions help retaining walls maintain equilibrium while creating a safe work environment.



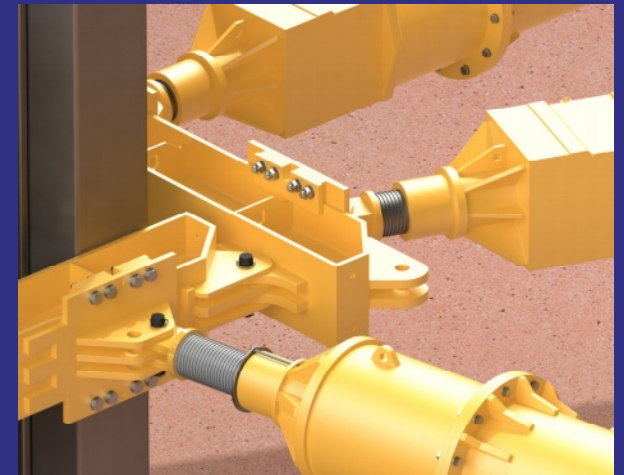
MODULARITY & COMPATIBILITY



If you are searching for versatile systems which are compatible with old-fashioned welding walers and struts, WE ARE HERE! Our systems are ready to connect with traditional frames by using special connectors. In our product range, we also have pipe adapters which adapt pipes from your stock to use in our Bracing.

CUSTOMISED DESIGN

From our experience, we know that every design is different and must meet some requirements. We always try to propose full solutions for every project and sometimes customized elements are necessary. In such cases, we are ready to design and manufacture special solutions which are not in our standard offer.



BRACING B300

The B300 Series can be used with heavy duty steel trench sheets or sheet piles to support excavations of various sizes and depths. The 300 Series extension modules have built-in shear stops to incorporate the use of knee braces and cross bracing. The 300 Series Bracing is recommended for tank braces from 13 ft to 33 ft and for strutted excavation of any size. It is normally assembled and installed within the excavation using either excavators or cranes.

The extension modules are made of S355 steel and are quickly assembled into brace legs using simple pin, bolt and nut assemblies. Each leg contains one end 12 in stroke fine adjuster that might be prestressed and released after job with removable hydraulic jacks and operated with manual pump. Opposite end is an 20 in stroke pinned rough adjuster. These are joined together at corners to form frames with a pin secured with R-clip.





BRACING B400

The B400 Bracing Series is heavier and stronger than B300 which helps to support excavations with loading up to 14 kips/ft in frame without struts. The B300 and B400 series are compatible and can be used together in one frame by using special adapters.

The B400 Series Bracing is recommended for excavations from 15 ft to 53 ft and is also installed within the excavation using either excavators or cranes.

Sections are made of steel grade S460, similar to our B300 series frame. These sections are joined at the corners with hydraulic and mechanical modules. The hydraulic module gives fine adjustment up to 14 in stroke. It is adjusted using a removable hydraulic jack and manual pump. While the mechanical module is adjusted manually and gives 20 in stroke.

BRACING B500

The B500 Bracing Series is our newest product which is designed for the most severe cases.

Main extension beams are based on in house designed 20 in plate girders. This solution allows the maximize utilization of sections with the lowest material consumption. The B500 Series is designed to carry the loading up to 33 kips /ft for frame without struts.

It works well in projects where large clear space is required.

B500 is compatible with B 400 Series and S 2000 strutting systems.

It is designed to be used as tank brace from 20 ft to 75 ft, with extension beams in range from 3 ft to 30 ft. Mechanical and hydraulic unit give stroke up to 60 in.



Brace B300

Brace B400

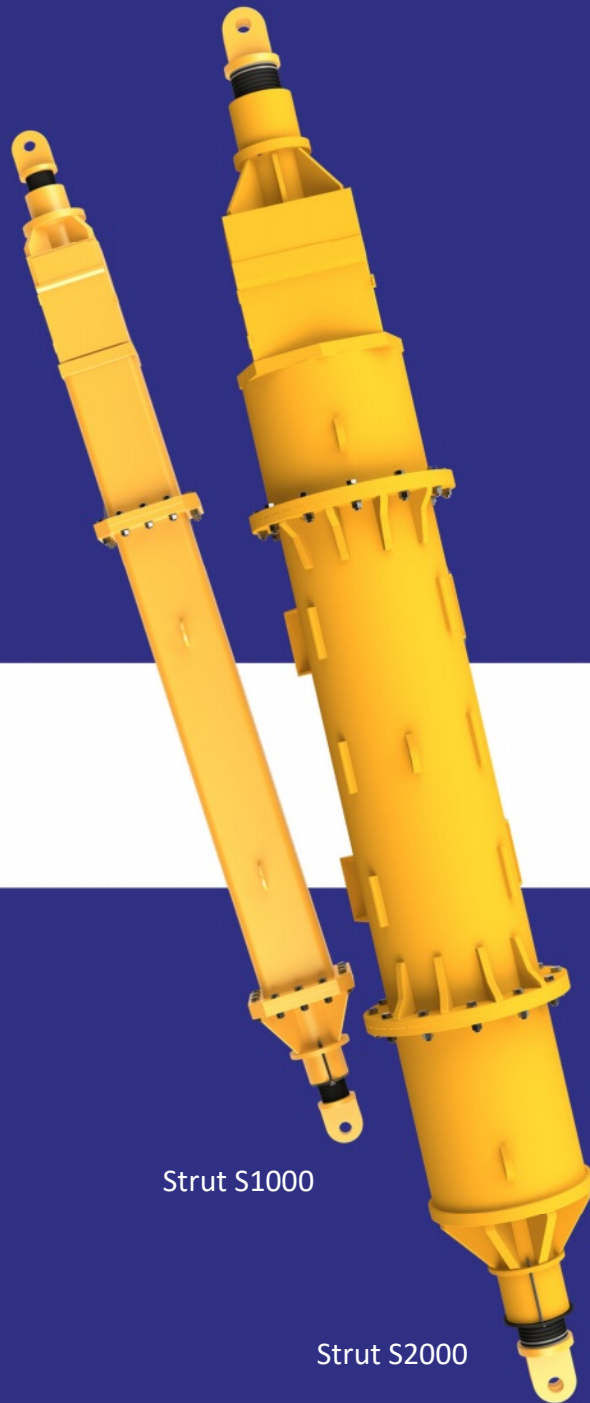
Brace B500



STRUT S1000

Strut S1000 is compatible with Bracings systems B300 and B400. It can also be used to prop reinforced piles and capping beams. Each strut, similar like in our Bracing Series is comprised of a hydraulic ram and mechanical unit together with extension modules of various lengths. The extensions are easily assembled into required lengths using bolts. This strutting system can support loads up to 100 tons of characteristic load and span up to 40 feet.





Strut S1000

Strut S2000

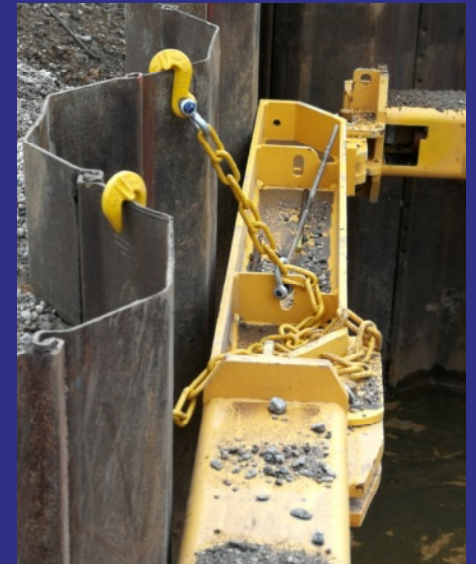


STRUT S2000

Strut S2000 is a heavy duty strutting system. This system can support the loads up to 200 tons of characteristic load. The span of S2000 strutting system may span from 12 ft to 92 ft. Once located at the correct position, the struts are pre-loaded against the face of the brace to be supported using a hydraulic pump on the ram.

PROJECTS

Meever Bracing systems have been used in various construction site excavations in many European countries and in the United States. We participate in the designing stage, through installation to disassembly.





We provide assistance during installation, also manual instructions of all types are available.



Meever Bracing system can be easily used with trench sheet piles, standard sheet pile walls, soldier piles and pile retaining walls.



Our patented solution is easy to use and requires only basic equipment for service.





This large excavation with dimensions of 82 ft x 82 ft and almost 46 ft deep was our first project in the U.S.

In this project, our full product range was utilized: Brace B300, Brace B400, and struts S1000 and S2000. About 200 tons of steel.

PUMPING STATION

Orlando, Florida





Our client saved about 2 months in cutting and welding of traditional frames by using our system!





Complex shape of excavation required additional lugs welded to the bracing beams on site.





The whole system was installed in 2 days. In this project full product range was used:

- Brace 300
- Brace 400
- Strut 1000
- Strut 2000

plus additional customized solution.

Technical data:

- Hydraulic fluid volume in system: 0 ounces
- Hydraulic fluid volume needed for installation: 1 gallon
- Manual hydraulic pump to 10152 psi used with 1.32 gal tank.





Due to the curved shape of the cofferdam, the non- standard solution had to be applied. In this case, our bracing system without mechanical and hydraulic modules were used. Additionally, extending elements in length of 6 ft and 10 ft on the wall with smaller radius were not connected to each other. Brace B300 extensions were supported against each other with 26 ft long S1000 struts. Upon completion of the work, struts and bracing were repositioned to the second part of the project.

PUMPING STATION

Northport , NY

For the pumping station in Northport ,
two adjacent excavations were designed
with the following dimensions:

- 31 ft x 28 ft, 33 ft deep
- 23 ft x 15 ft, 26 ft deep

In this project we used 3 frames of Bracing
300 and struts S1000.



FISH PASS NEXT TO DAM ON SPREE RIVER

Cottbus, Germany





Contact us!

Meever Bracing is not restricted to size or shape. It is versatile in every aspect.

We provide preliminary design outlining the sheets and amount of bracing needed to secure your excavation.

You can find us at:

[www. meeverbracing.com](http://www.meeverbracing.com)

Meever Southeast Office

965 Leonard C Taylor Pkwy

Green Cove Springs, FL

T 1 (866) 313 8770

E info@meeverbracing.com

