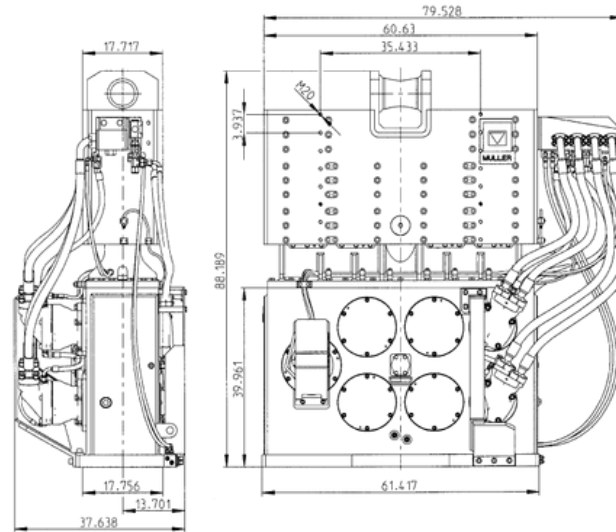


MS- 28 HFV



Centrifugal force F (max.)	Eccentric moment M stat (variable)	Frequency f (max.)	Speed n (max.)	Pulling force F pull (max.)	Weight total without clamping device	Weight dynamic without clamping device	Amplitude without clamping device/pile	Power consumption P (max.)	Required oil flow Q motor (max.)	Operating pressure p (max.)	Dimensions Length L	Dimensions Width B	Dimensions Height H	Dimensions Throat T	Single clamping device Type	Double clamping device Type	Recommended power pack Type
150 US Tons (1,500 kN)	0-2,429.28 In-lbs (0-28 kgm)	36.8 Hz	2,210 min-1	50 US Tons (500 kN)	11,440 LBS (5,200 kg)	6,490 LBS (2,950 kg)	0.72 In (18 mm)	509.2/69 4.12 HP (380/518 kW)	169.52/230. 88 gal/min (652/888 l/min)	5,075 PSI (350 bar)	84.4 In (2,110 mm)	34.64/38.24 In (866/956 mm)	89.6 In (2,240 mm)	18.04 In (451 mm)	180 MS-U	2x80/100 MS-U	570 MS-A (420 MS-A)